

Eaton Gardens

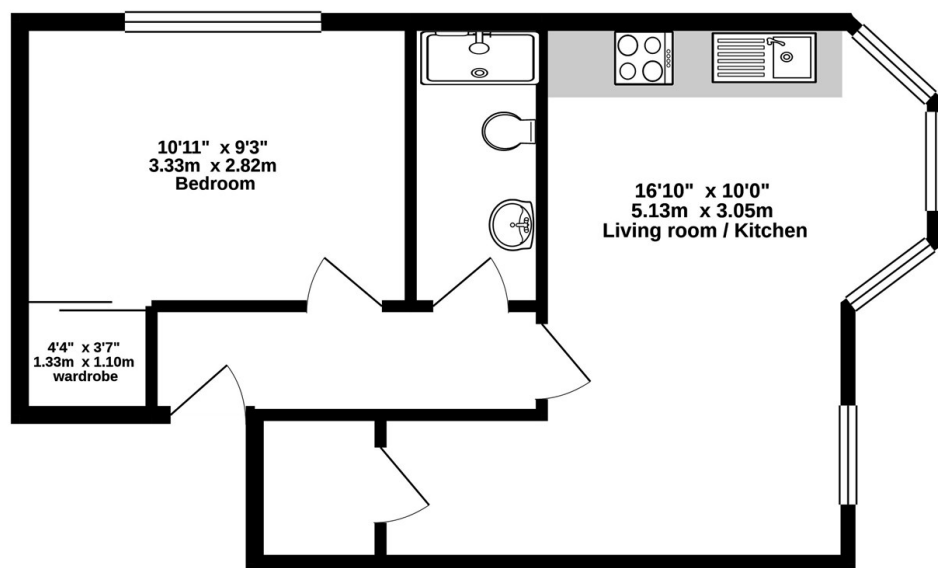
, Hove BN3 3TT

- VIDEO LINK
- First Floor Apartment
- Double Glazed Windows
- Furnishing Optional
- Stones Throw From Hove Station
- Available 15th February
- Modern Fitted Kitchen with Appliances
- Floor Plan Available
- One Double Bedroom with Built in Wardrobe
- Great Location

£1,200 PCM

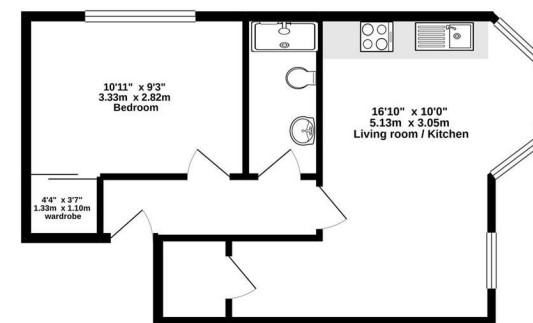
Local Authority
Council Tax Band **A**
EPC Rating **C**

GROUND FLOOR
377 sq.ft. (35.0 sq.m.) approx.



TOTAL FLOOR AREA : 377 sq.ft. (35.0 sq.m.) approx.

Whilst every attempt has been made to ensure the accuracy of the floorplan contained here, measurements of doors, windows, rooms and any other items are approximate and no responsibility is taken for any error, omission or mis-statement. This plan is for illustrative purposes only and should be used as such by any prospective purchaser. The services, systems and appliances shown have not been tested and no guarantee as to their operability or efficiency can be given.
Made with Metropix ©2021



TOTAL FLOOR AREA : 377 sq.ft. (35.0 sq.m.) approx.

Whilst every attempt has been made to ensure the accuracy of the floorplan contained here, measurements of doors, windows, rooms and any other items are approximate and no responsibility is taken for any error, omission or mis-statement. This plan is for illustrative purposes only and should be used as such by any prospective purchaser.

Stanfords Lettings Office
30-31 North Street, Brighton,
East Sussex, BN1 1EB

Contact
01273 733334
lettings@stanfords-
estates.com
www.stanfords-estates.com

Agents Note: Whilst every care has been taken to prepare these particulars, they are for guidance purposes only. All measurements are approximate and for general guidance purposes only and whilst every care has been taken to ensure accuracy, they should not be relied upon and potential buyers/tenants are advised to recheck the measurements.