

## Bartholomew Square

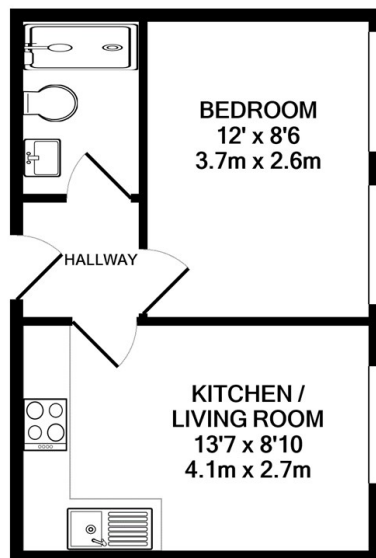
, Brighton BN1 1JS

- Video Link Available
- One Double Bedroom
- Underfloor Heating
- 4th Floor Apartment
- Close To Public Transport and Shops
- Available NOW
- Kitchen Appliances
- Secure FOB Entry System
- Two Lifts Rising To Top Floor
- Central Brighton Location

**£1,350 PCM**

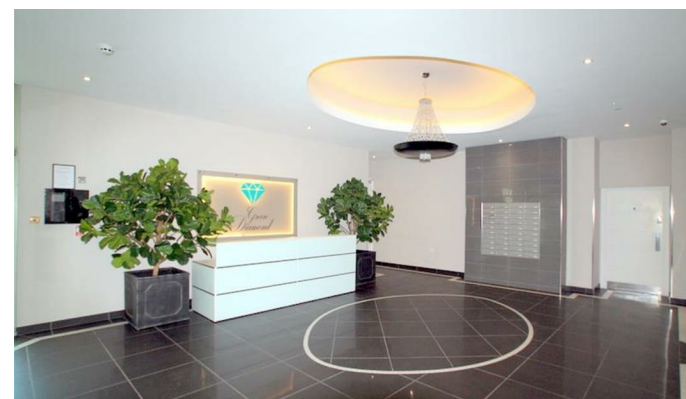
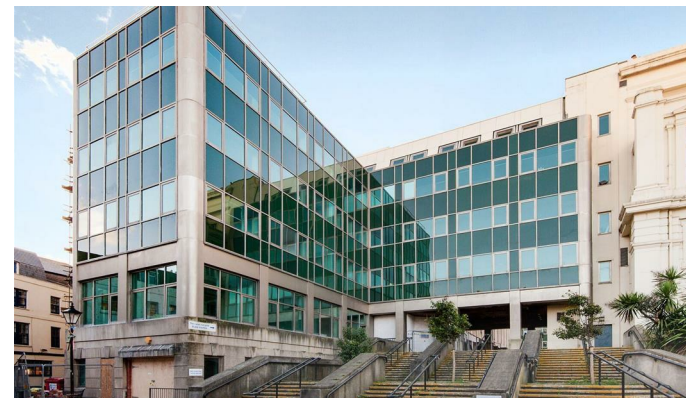


**Local Authority** Brighton &  
**Hove City Council**  
**Council Tax Band** C  
**EPC Rating** C



**TOTAL APPROX. FLOOR AREA 312 SQ.FT. (29.0 SQ.M.)**

Whilst every attempt has been made to ensure the accuracy of the floor plan contained here, measurements of doors, windows, rooms and any other items are approximate and no responsibility is taken for any error, omission, or mis-statement. This plan is for illustrative purposes only and should be used as such by any prospective purchaser. The services, systems and appliances shown have not been tested and no guarantee as to their operability or efficiency can be given  
Made with Metropix ©2020



**Moretons Lettings Office**  
30-31 North Street, Brighton,  
East Sussex, BN1 1EB

### **Contact**

Agents Note: Whilst every care has been taken to prepare these particulars, they are for guidance purposes only. All measurements are approximate and for general guidance purposes only and whilst every care has been taken to ensure accuracy, they should not be relied upon and potential buyers/tenants are advised to recheck the measurements.