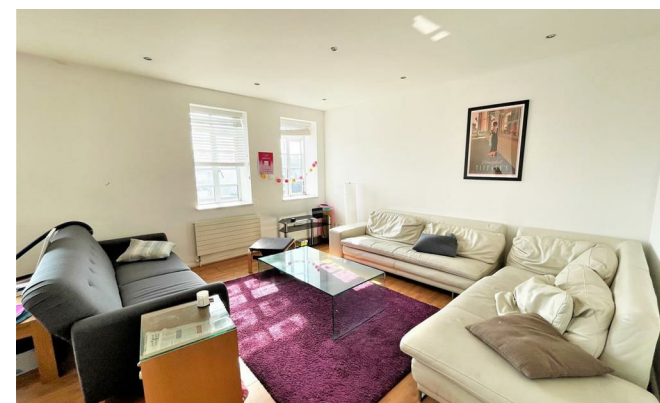




**Stanfords**  
Estate Agents



**165-169 North Street**

, Brighton BN1 1EA

- Available 10th JUNE
- Two Double Bedrooms Two Bathrooms
- TOP FLOOR with lift
- Integrated Kitchen Appliances
- Luxury Living
- Open Plan Kitchen Living Room
- Fully furnished
- Fantastic Views

**£2,200 PCM**



**Local Authority** Brighton &  
**Hove City Council**  
**Council Tax Band** F  
**EPC Rating** C

FLOOR NAME  
786 sq.ft. (73.0 sq.m.) approx.



TOTAL FLOOR AREA: 786sq ft. (73.0 sq.m.) approx.  
Whilst every attempt has been made to ensure the accuracy of the floorplan contained here, measurements of doors, windows, rooms and any other items are approximate and no responsibility is taken for any error, omission or misstatement. This plan is for illustrative purposes only and should be used as such by any prospective purchaser. The services, systems and appliances shown have not been tested and no guarantee as to their operability or efficiency can be given.  
Made with Goodesign 11/2021



**Stanfords Lettings Office**  
30-31 North Street, Brighton,  
East Sussex, BN1 1EB

**Contact**  
01273 733334  
lettings@stanfords-  
estates.com  
www.stanfords-estates.com

Agents Note: Whilst every care has been taken to prepare these particulars, they are for guidance purposes only. All measurements are approximate and for general guidance purposes only and whilst every care has been taken to ensure accuracy, they should not be relied upon and potential buyers/tenants are advised to recheck the measurements.