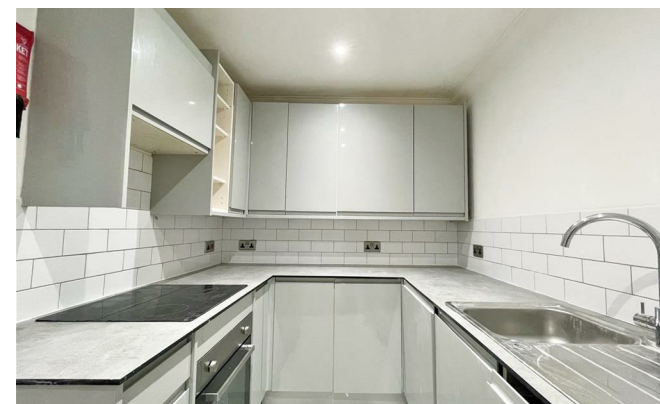
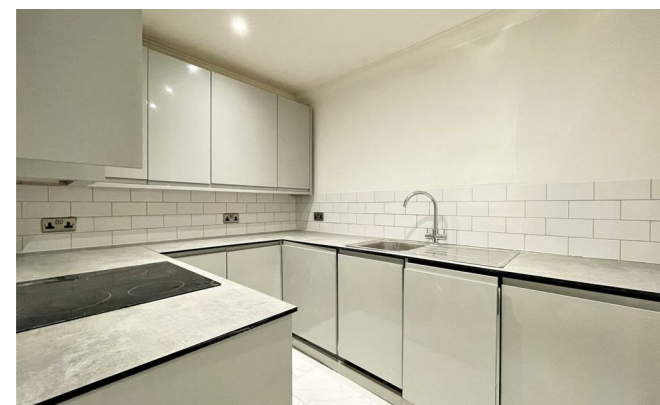




**Stanfords**  
Estate Agents



## Richmond Place

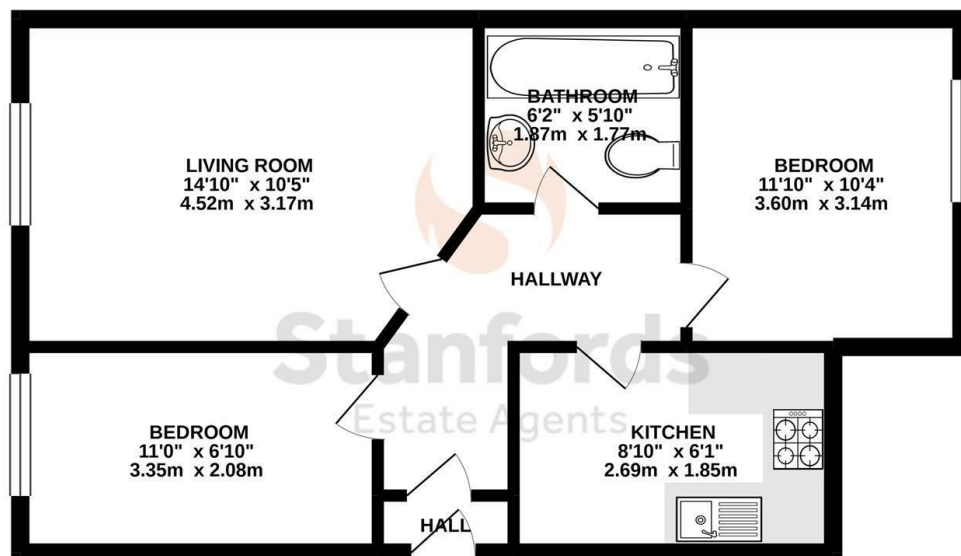
, Brighton BN2 9NA

- Available 19th JULY 2024
- Ground Floor Apartment
- Modern Kitchen With Appliances
- Stones Throw From Station and Bus Routes
- Students Welcome
- Two Double Bedrooms
- Excellent condition throughout
- Central Brighton Location
- Furnished or non furnished optional at additional cost
- Long Term Let

**£1,875 PCM**

**Local Authority** Brighton &  
**Hove City Council**  
**Council Tax Band** B  
**EPC Rating** C

**GROUND FLOOR**  
494 sq.ft. (45.9 sq.m.) approx.



TOTAL FLOOR AREA : 517sq.ft. (48.0 sq.m.) approx.

Whilst every attempt has been made to ensure the accuracy of the floorplan contained here, measurements of doors, windows, rooms and any other items are approximate and no responsibility is taken for any error, omission or mis-statement. This plan is for illustrative purposes only and should be used as such by any prospective purchaser. The services, systems and appliances shown have not been tested and no guarantee as to their operability or efficiency can be given.  
Made with Metropix ©2021.



**Moretons Lettings Office**  
30-31 North Street, Brighton,  
East Sussex, BN1 1EB

### Contact

Agents Note: Whilst every care has been taken to prepare these particulars, they are for guidance purposes only. All measurements are approximate and for general guidance purposes only and whilst every care has been taken to ensure accuracy, they should not be relied upon and potential buyers/tenants are advised to recheck the measurements.