

Norfolk Terrace , Brighton BN1 3AD

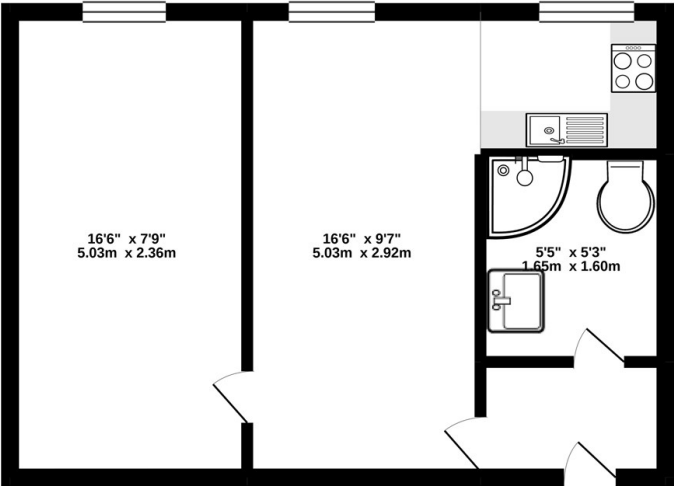
- VIDEO LINK
- One Double Bedroom
 - High Ceilings
- Student and Professional Friendly
 - Great location
- Available 22nd August
 - First Floor
- Furniture Optional
- Long Term Rental
- Built in Wardrobe

£1,300 PCM



Local Authority Brighton &
Hove City Council
Council Tax Band
EPC Rating

GROUND FLOOR
367 sq.ft. (34.1 sq.m.) approx.



TOTAL FLOOR AREA: 367 sq ft. (34.1 sq.m.) approx.
Whilst every attempt has been made to ensure the accuracy of the floorplan contained here, measurements of doors, windows, rooms and any other items are approximate and no responsibility is taken for any error, omission or mis-statement. This plan is for illustrative purposes only and should be used as such for any prospective purchase. The services, systems and appliances shown have not been tested and no guarantee as to their operability or efficiency can be given.
Made with Metriplex 11/2021



Moretons Lettings Office
30-31 North Street, Brighton,
East Sussex, BN1 1EB

Contact

Agents Note: Whilst every care has been taken to prepare these particulars, they are for guidance purposes only. All measurements are approximate and for general guidance purposes only and whilst every care has been taken to ensure accuracy, they should not be relied upon and potential buyers/tenants are advised to recheck the measurements.