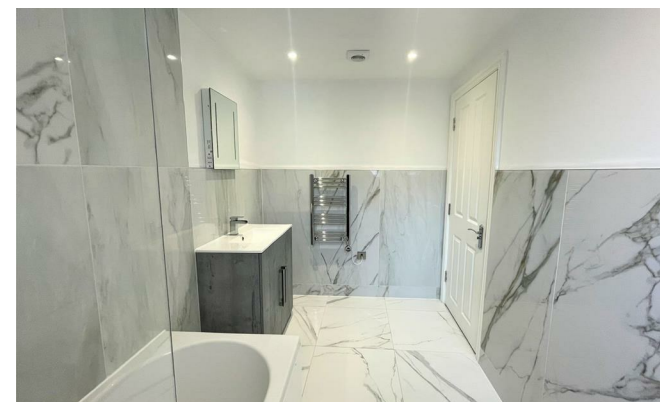




**Stanfords**  
Estate Agents



## Marlborough Place

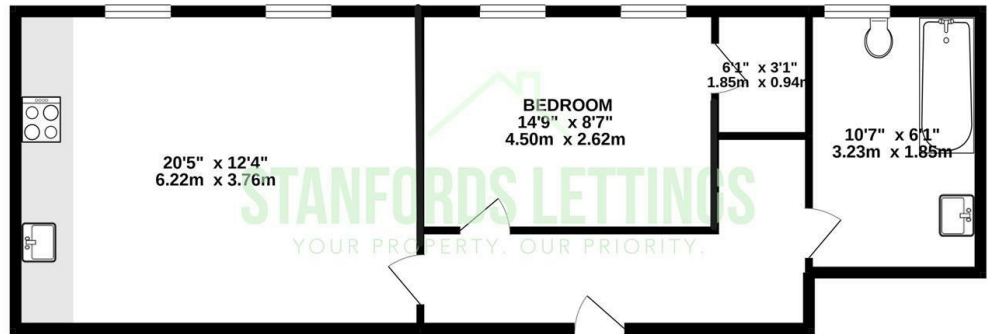
, Brighton BN1 1UB

- AVAILABLE NOVEMBER 2024
- Close To All Local Amenities
  - First Floor
  - High Ceilings
  - Wonderful Location
- VIDEO LINK AVAILABLE
- One Double Bedroom
- Integrated Appliances
- Video entry system
- Furniture Options Available

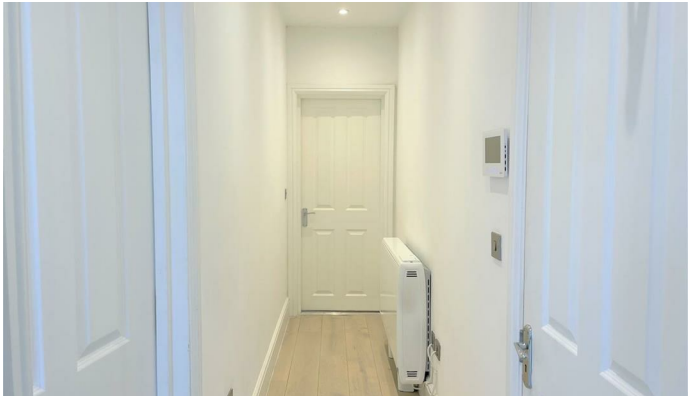
**£1,450 PCM**

Local Authority Brighton &  
Hove City Council  
Council Tax Band B  
EPC Rating A

FLOOR NAME



Whilst every attempt has been made to ensure the accuracy of the floorplan contained here, measurements of doors, windows, rooms and any other items are approximate and no responsibility is taken for any error, omission or mis-statement. This plan is for illustrative purposes only and should be used as such by any prospective purchaser. The services, systems and appliances shown have not been tested and no guarantee as to their operability or efficiency can be given.  
Made with Metropix ©2021



**Moretons Lettings Office**

30-31 North Street, Brighton,  
East Sussex, BN1 1EB

**Contact**

Agents Note: Whilst every care has been taken to prepare these particulars, they are for guidance purposes only. All measurements are approximate and for general guidance purposes only and whilst every care has been taken to ensure accuracy, they should not be relied upon and potential buyers/tenants are advised to recheck the measurements.