

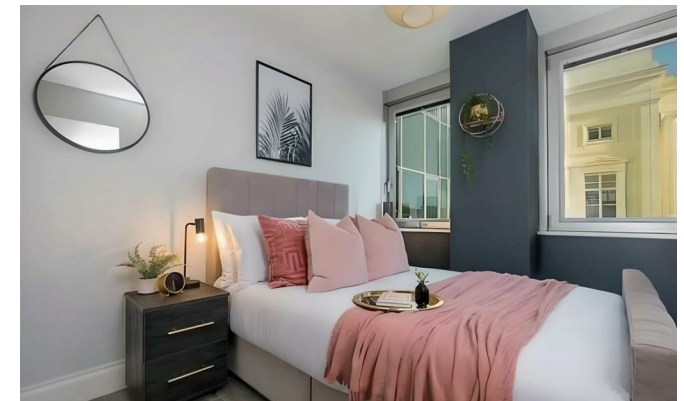


Bartholomew Square

, Brighton BN1 1JS

- STUDENTS AND COMPANIES WELCOME!
 - Two Double Bedrooms
 - Integrated Appliances
- Close to Brighton Station and Seafront
 - Third Floor Apartment with Lift
- Available January 6th
- Modern Living Throughout
- Underfloor Heating Throughout
 - Hardwood Flooring
 - Option For Furniture

£1,950 PCM



Local Authority Brighton &
Hove City Council
Council Tax Band D
EPC Rating C

FLOOR NAME
635 sq.ft. (59.0 sq.m.) approx.



TOTAL FLOOR AREA : 635 sq.ft. (59.0 sq.m.) approx.
Whilst every attempt has been made to ensure the accuracy of the floorplan contained here, measurements of doors, windows, rooms and any other items are approximate and no responsibility is taken for any error, omission or mis-statement. This plan is for illustrative purposes only and should be used as such by any prospective purchaser. The services, systems and appliances shown have not been tested and no guarantee as to their operability or efficiency can be given.
Made with Metronix ©2021.

Moretons Lettings Office

30-31 North Street, Brighton,
East Sussex, BN1 1EB

Contact

Agents Note: Whilst every care has been taken to prepare these particulars, they are for guidance purposes only. All measurements are approximate and for general guidance purposes only and whilst every care has been taken to ensure accuracy, they should not be relied upon and potential buyers/tenants are advised to recheck the measurements.

