

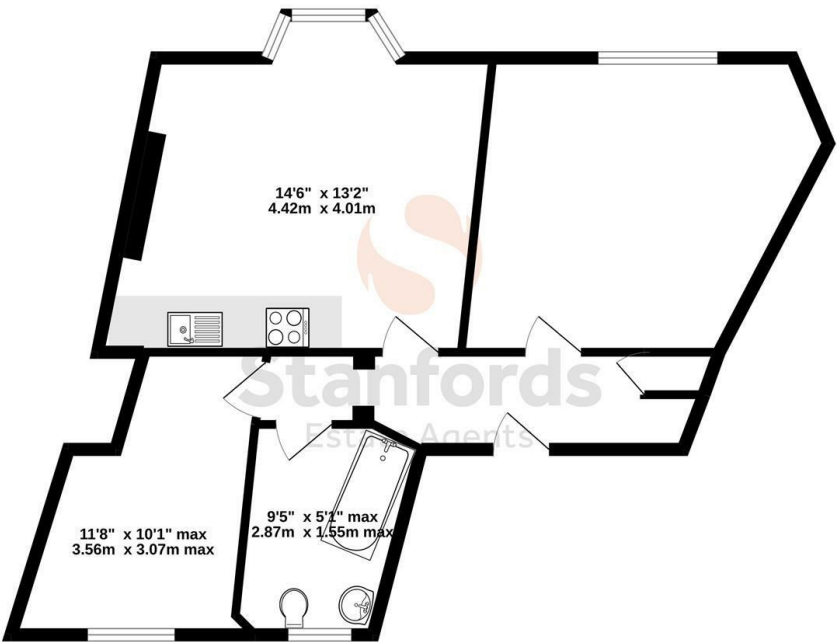
Islingword Road

, Brighton BN2 9SE

- AVAILABLE NOW!
 - First Floor Flat
 - Long Term
- Newly Refurbished
- Bright and Spacious
- Two Double Bedrooms
 - Furniture Optional
 - Great Location
- Students Welcome
 - Natural Light

£1,600 Per Month

Local Authority Brighton and
Hove City Council
Council Tax Band A
EPC Rating D



TOTAL FLOOR AREA: 783 sq.ft (72.7 sq.m.) approx.
Whilst every attempt has been made to ensure the accuracy of the floorplan contained here, measurements of doors, windows, rooms and any other items are approximate and no responsibility is taken for any error, omission or mis-statement. This plan is for illustrative purposes only and should be used as such by any prospective purchaser. The services, systems and appliances shown have not been tested and no guarantee as to their operability or efficiency can be given.
Made with Metroplan ©2022



Moretons Lettings Office
30-31 North Street, Brighton,
East Sussex, BN1 1EB

Contact

Agents Note: Whilst every care has been taken to prepare these particulars, they are for guidance purposes only. All measurements are approximate and for general guidance purposes only and whilst every care has been taken to ensure accuracy, they should not be relied upon and potential buyers/tenants are advised to recheck the measurements.