



Donkey Mews

, Hove BN3 1AW

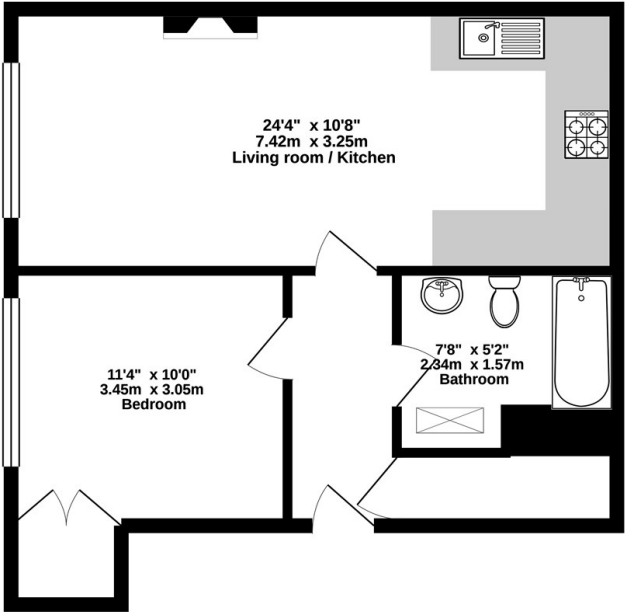
- VIDEO Link
- One Double Bedroom
 - Superb Size
- Furniture Optional
- Long / Short Term
- Available NOW
- Open Plan Kitchen Living Room
 - Floor Plan Attached
 - Hard Wood Flooring
 - Fantastic Location

£1,350 PCM



Local Authority Brighton &
Hove City Council
Council Tax Band A
EPC Rating C

GROUND FLOOR
515 sq.ft. (47.9 sq.m.) approx.



TOTAL FLOOR AREA: 538sq.ft. (50.0 sq.m.) approx.
Whilst every attempt has been made to ensure the accuracy of the floorplan contained herein, measurements of doors, windows, rooms and any other items are approximate and no responsibility is taken for any error, omission or misstatement. This plan is for illustrative purposes only and should be used as such by any prospective purchaser. The services, systems and appliances shown have not been tested and no guarantee as to their operability or efficiency can be given.
Made with Metreplex ©2021



Moretons Lettings Office

30-31 North Street, Brighton,
East Sussex, BN1 1EB

Contact

Agents Note: Whilst every care has been taken to prepare these particulars, they are for guidance purposes only. All measurements are approximate and for general guidance purposes only and whilst every care has been taken to ensure accuracy, they should not be relied upon and potential buyers/tenants are advised to recheck the measurements.