

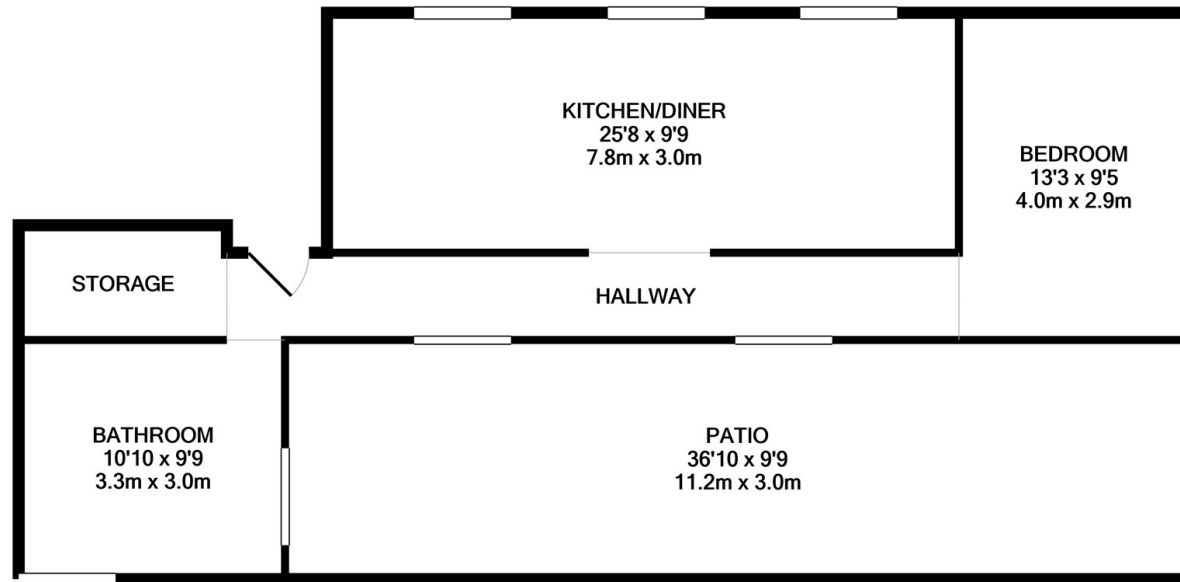
## Marlborough Place

, Brighton BN1 1UB

- VIDEO and Floor Plan attached
  - Top Floor Flat
  - Private Roof Terrace
  - Fantastic Location
- Spacious Living Room Kitchen
- Available October 2023
- One Double Bedroom
- Built In Appliances Included
  - Furniture Optional
  - Recently Refurbished

**£1,650 PCM**

**Local Authority Brighton &  
Hove City Council  
Council Tax Band B  
EPC Rating E**



**TOTAL APPROX. FLOOR AREA 983 SQ.FT. (91.3 SQ.M.)**

Whilst every attempt has been made to ensure the accuracy of the floor plan contained here, measurements of doors, windows, rooms and any other items are approximate and no responsibility is taken for any error, omission, or mis-statement. This plan is for illustrative purposes only and should be used as such by any prospective purchaser. The services, systems and appliances shown have not been tested and no guarantee as to their operability or efficiency can be given  
Made with Metropix ©2020



**Moretons Lettings Office**  
30-31 North Street, Brighton,  
East Sussex, BN1 1EB

### **Contact**

Agents Note: Whilst every care has been taken to prepare these particulars, they are for guidance purposes only. All measurements are approximate and for general guidance purposes only and whilst every care has been taken to ensure accuracy, they should not be relied upon and potential buyers/tenants are advised to recheck the measurements.