



## Bartholomew Square

, Brighton BN1 1JS

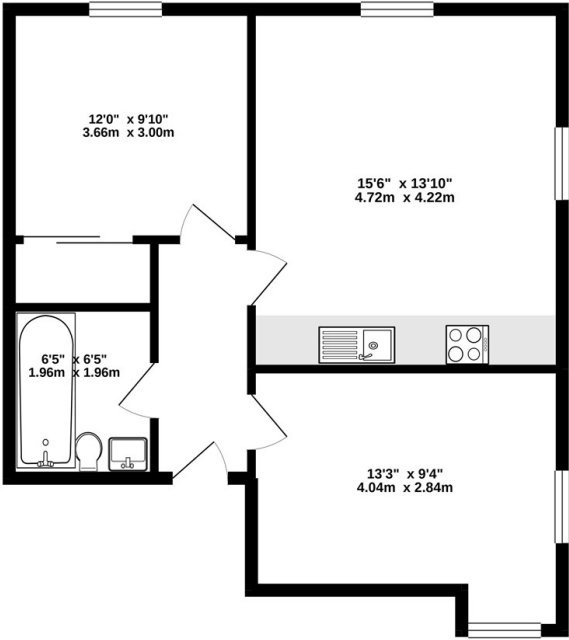
- QUOTE REFERENCE 2206
  - Two Double Bedrooms
- Hard floor With Underfloor Heating
  - Secure FOB Entry System
  - Furnished Optional
- Available NOW
- Modern Finish Throughout
  - Two Lifts To All Floors
  - Underfloor Heating
- Central Brighton Location

**£1,950 PCM**



Local Authority Brighton &  
Hove City Council  
Council Tax Band B  
EPC Rating C

FLOOR  
581 sq.ft. (54.0 sq.m.) approx.



TOTAL FLOOR AREA: 581 sq.ft. (54.0 sq.m.) approx.  
Whilst every attempt has been made to ensure the accuracy of the floorplan contained here, measurements of doors, windows, rooms and any other items are approximate and no responsibility is taken for any error, omission or misstatement. This plan is for illustrative purposes only and should be used as such by any prospective purchaser. The services, systems and appliances shown have not been tested and no guarantee as to their operability or efficiency can be given.  
Made with Metropix v10.021



Moretons Lettings Office  
30-31 North Street, Brighton,  
East Sussex, BN1 1EB

Contact

Agents Note: Whilst every care has been taken to prepare these particulars, they are for guidance purposes only. All measurements are approximate and for general guidance purposes only and whilst every care has been taken to ensure accuracy, they should not be relied upon and potential buyers/tenants are advised to recheck the measurements.