

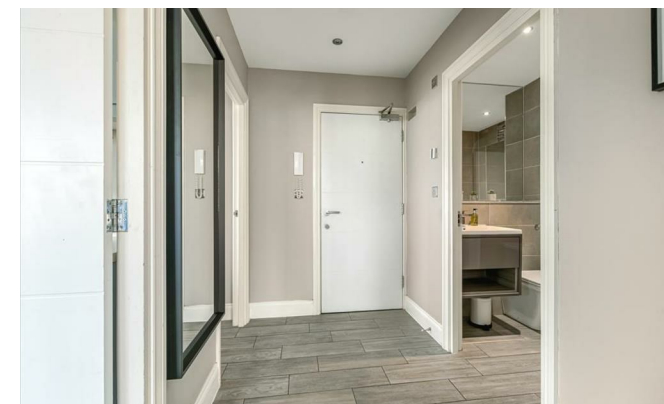


Bartholomew Square

, Brighton BN1 1JS

- VIDEO LINK
- Two Double Bedrooms
 - Underfloor Heating
 - Communal Lift
- Neutral Décor Throughout
- Available NOW
- Integrated Kitchen Appliances
 - Furniture Optional
 - First Floor
- Students welcome

£1,975 PCM

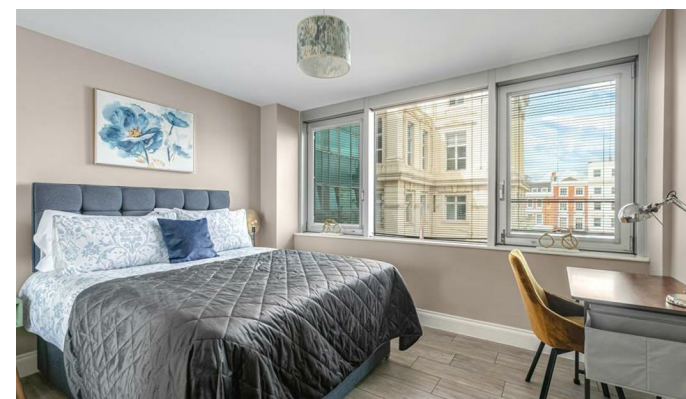
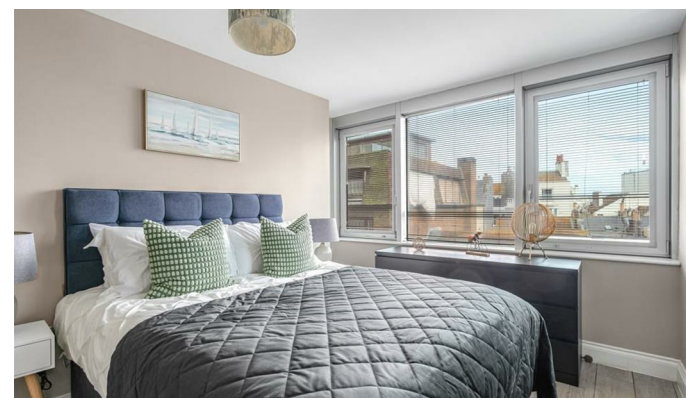


Local Authority Brighton &
Hove City Council
Council Tax Band D
EPC Rating C

FLOOR
581 sq.ft. (54.0 sq.m.) approx.



TOTAL FLOOR AREA: 581 sq ft. (54.0 sq.m.) approx.
Whilst every attempt has been made to ensure the accuracy of the floorplan contained herein, measurements of rooms, corridors, stairs and any other areas are approximate and no responsibility is taken for any errors, omissions or mis-statements. This plan is for illustrative purposes only and should be used as such for any prospective purchase. The actual size, location and appearance of rooms have not been measured and no guarantee as to their operability or efficiency can be given.
Made with Mapogen 10/2021



Moretons Lettings Office
30-31 North Street, Brighton,
East Sussex, BN1 1EB

Contact

Agents Note: Whilst every care has been taken to prepare these particulars, they are for guidance purposes only. All measurements are approximate and for general guidance purposes only and whilst every care has been taken to ensure accuracy, they should not be relied upon and potential buyers/tenants are advised to recheck the measurements.